



Tacoma Facility

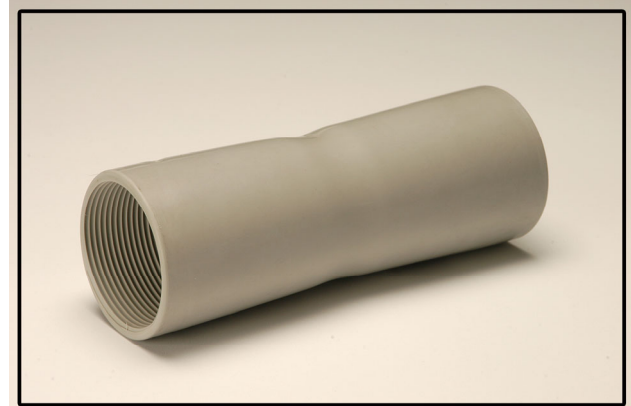
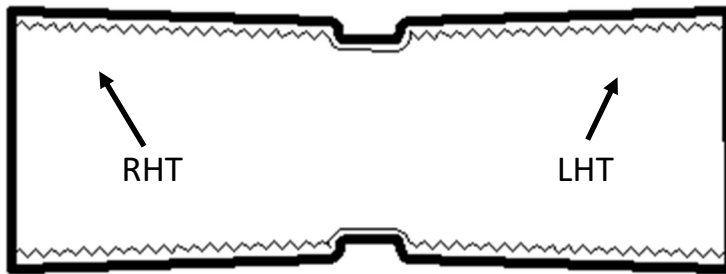
1427 E 26th Street
Tacoma, WA 98421
(253) 272-7788

Quincy Facility

1302 NE Intermodal Way
Quincy, WA 98848
(509) 497-0350

POLY TO POLY ADAPTERS

One side has right hand threads and the other side has left hand threads to join two pieces of polyethylene pipe simultaneously



Pipe Size (inches)	Overall Length OAL (avg)	Poly Side A (avg)	Poly Side B (avg)	Gap C (min)	Weight (lbs)
1	5.5	2.25	2.25	0.75	0.236
1 ¼	6.5	2.5	2.5	1.0	0.360
1 ½	6.75	2.75	2.75	1.0	0.450
2	7.5	3.25	3.25	1.0	0.720
3	8.75	3.75	3.75	1.5	1.633
4	10.5	4.0	4.0	1.5	2.737
6	14.5	6.25	6.25	2.0	7.166

Advantages & Highlights of Poly-Poly Adapters

- Manufactured from Schedule 80 pipe conforming to UL 651 and NEMA TC-2 *Electrical Polyvinyl Chloride (PVC) Conduit*
- Poly side is threaded to screw directly onto polyethylene pipe
- Threads are made to the following specifications
 - ½" - 2" = 10 threads per inch
 - 3" - 6" = 8 threads per inch
 - Taper is 3/4" per foot (approx. 3.5°)
- Right Hand Thread (RHT) and Left Hand Thread (LHT) allow two plain ends of polyethylene pipe to be joined at the same time
- Dimensions are approximate and subject to normal manufacturing tolerances

All dimensions are inches