



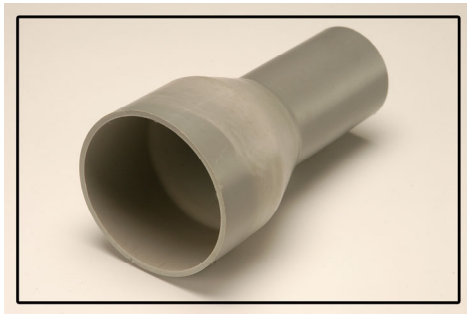
Tacoma Facility

1427 E 26th Street
Tacoma, WA 98421
(253) 272-7788

Quincy Facility

1302 NE Intermodal Way
Quincy, WA 98848
(509) 497-0350

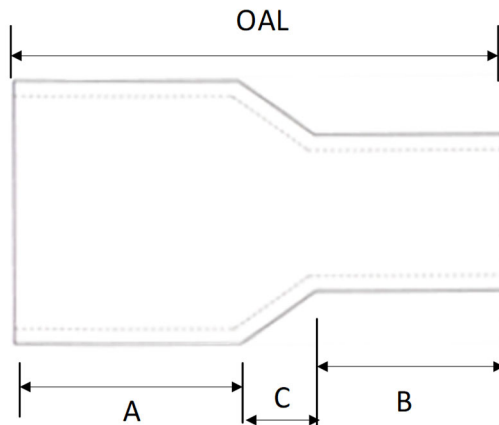
PVC SWEDGE REDUCERS



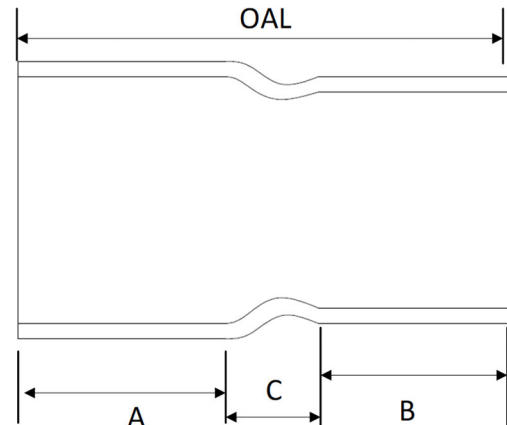
Finishing Options

1. Bell-by-Spigot (picture to left)
2. Bell-by-Bell (picture below)
 - Tapered interference fit for solvent weld PVC
 - Socket per NEMA TC-3 socket entrance.
 - Optional Inner ID chamfered 0.3" min. at 45°

Bell-by-Spigot



Bell-by-Bell



Size	OAL (inch)	A (inch)	B (inch)	C (inch)	Weight (lbs)
1 - ¾	2.75	1.125	1.125	0.5	0.068
1 ¼ - 1	3.875	1.75	1.625	0.5	0.171
1 ½ - 1	4.0	1.75	1.5	0.75	0.230
2 - 1 ¼	4.75	2.25	2.0	0.75	0.566
2 - 1 ½	4.75	2.0	2.0	0.75	0.336
2 ½ - 2	6.75	2.75	3.0	1.0	0.728
3 - 2	7.25	3.0	3.25	1.0	1.242
3 - 2 ½	8.0	3.25	3.75	1.0	1.173
4 - 3	8.75	4.25	4.0	1.5	1.970
5 - 4	10.5	4.25	4.0	1.75	3.137
6 - 5	11.75	4.75	5.25	1.25	4.411

Size	OAL (inch)	A (inch)	B (inch)	C (inch)
3 - 2	7.0	2.875	1.75	2.375
3 - 2 ½	7.75	2.875	2.5	2.375
4 - 3	8.5	3.375	2.875	2.25
5 - 4	10.0	4.0	3.375	2.625
6 - 5	11.25	4.0	4.5	2.75

Advantages & Highlights of Swedge Reducers

- Manufactured to NEMA TC-3 specifications for *Polyvinyl Chloride (PVC) Fittings for Use with Rigid PVC Conduit and Tubing*.
- Rigid PCD conduit and fittings covered in these requirements are intended to be joined with a cement that is or contains a solvent for polyvinyl chloride.
- Dimensions are approximate and subject to normal manufacturing tolerances.

*Other sizes available upon request